



EXETER LIVESTOCK CENTRE

MARKET REPORT

March 2025

Friday 21st March – Store Stock Market





SOUTH DEVON HERD BOOK SOCIETY'S

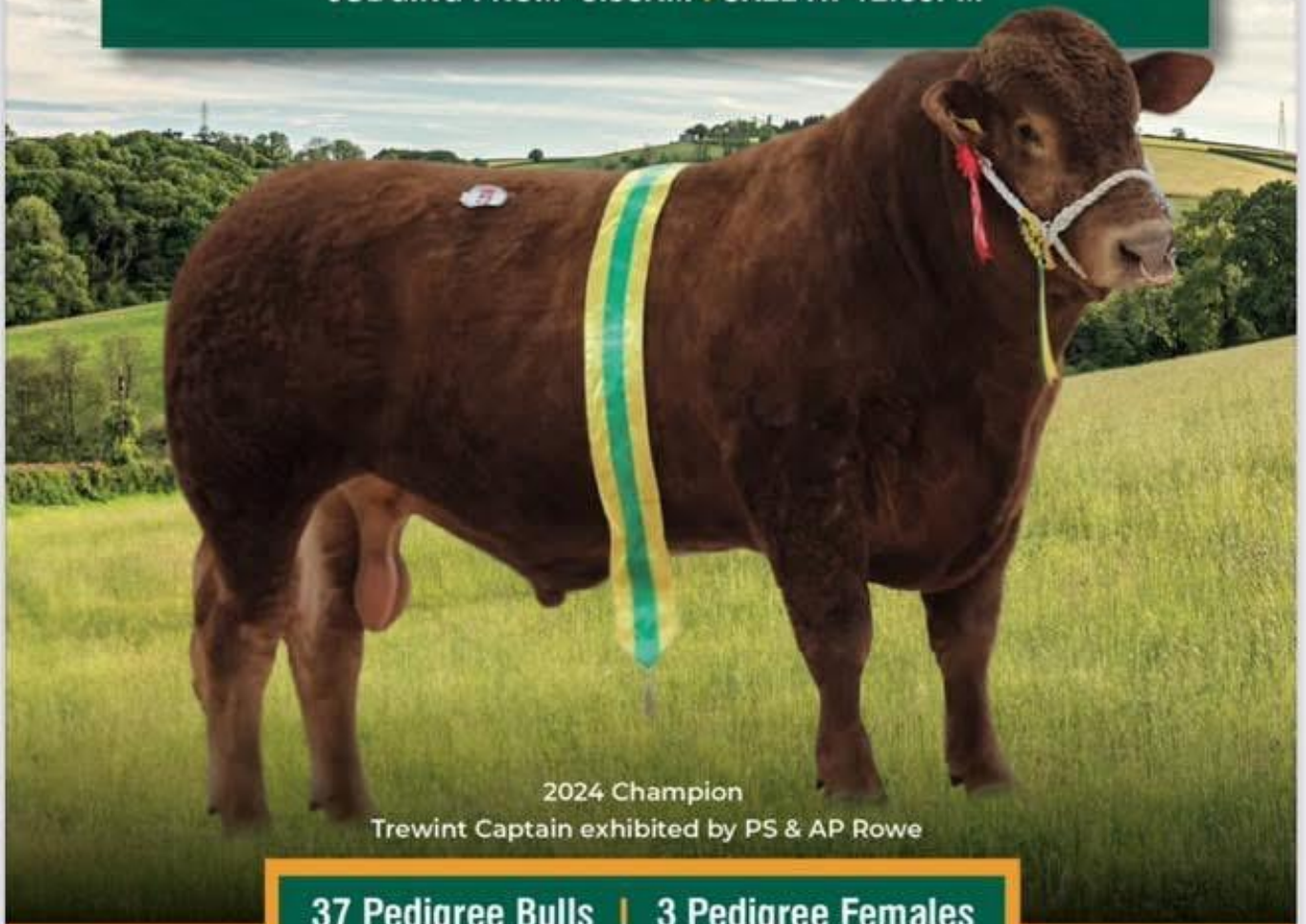
SPRING SHOW & SALE 2025

EXETER LIVESTOCK CENTRE, MATFORD, EXETER, EX2 8FD

Sale by Auction under NBA Terms & Conditions of Sale

WEDNESDAY 9TH APRIL 2025

JUDGING FROM 8.30AM | SALE AT 12.30PM



2024 Champion

Trewint Captain exhibited by PS & AP Rowe

37 Pedigree Bulls | 3 Pedigree Females

All TB tested and either CHeCs accredited free of BVD or individually tested negative for BVD antigen, and all vaccinated for BVD at least one month prior to Sale date.

SINGLE STEP BREEDPLAN EBVs incorporating genomics

Friday 21st March

496 STORE CATTLE & STIRKS – 10:00 AM

Auctioneer: Simon Alford 07789 980203

Store Steers to £2600 and averaging £2001

Store Heifers to £2540 and averaging £1558

A super yarding of store cattle here at Exeter this week and some tremendous, high quality steers and heifers on offer selling in front of a host of buyers and to an outstanding trade once again, right across the board. Many drawn this week not only by the ever strengthening demand, but also by our second spring show and sale of continental bred stores. Friday saw steers averaged an incredible £2001 for the very first time here at Exeter and topped at a very decent £2600 given for a majestic British Blonde (21m) from Brian Davis up from St Ives who also saw other Blonde steers of high order reach £2460, whilst Mary and Dan Alford of Tavistock saw their leading Blonde bullocks (20m) realise £2180 for a pair. Limousin steers next up when drawing £2560 (23m) for Brian Vallance and Family from Bickington with a cracker followed by more excellent Limousins in the way of a pair (22m) from Christopher Lee of Farway at £2540, also, younger (18m) Limousin sorts still ran to £2210 for Paul Giddy up from Downton whilst later born again ones (14m) came back at £2090 for Rob and Sue Greep of Cornwood. Dan Gould of Taunton brought another of his fine consignments of fed steers and parted with eye catching, strong Aberdeen Angus bullocks (22m) for £2540 with others just a month or two younger from Brian Vallance and Family coming back at £2380 and 18 month old Angus Bullocks from Robert and Christine Harris of Bickleigh, Tiverton selling to £2000 for a pen of five. Dan Gould was back selling more quality forward steers to £2500 for a super trio of British Blues (24m) as well as parting with a big bunch of six South Devon sorts (22m) for the same money as well as seeing three Hereford bullocks (22m) rise to £2480 a life. Other Blue, South Devon and Herefords steers (all around the 22m mark) to £2250, £2400 and £2240 respectively for Richard Bond of Blackawton, Martin and David Sampson from Chudleigh and James Stone of Sticklepath. Best of the Charolais bred steers (21m) came from Dan Gould and Jeff Harvey of Hennock with Dan selling his to £2440 with Jeff close when his saw £2420. Store heifers in amazing demand too this week and peaking at £2540 for a pair of high calibre British Blondes (24m) from Brian Davis followed by tremendous Limousin bred females (22m) from Brian Vallance and Family returning £2400 and £2300. Lynn Elliott sent a couple of well covered, aged Charolais up from Ashburton and saw them return here £2380 and £2360 followed by later born Charolais (21m) at £2300 for Jeff Harvey with Aberdeen Angus heifers (21m) hitting £2120 for Brian Vallance and Family and £1950 for Bruce Ellett of Exmouth. Best of the rest in the store heifer pens saw British Blues (24m) reach £1950 for Robert Moore of Diptford and Simmentals (22m) saw £1760 for Russell Williams of Blackawton. Just a few young feeding bulls about this week with a British Blue (14m) from Ed Pincombe of Chulmleigh coming back at £1980 and a Hereford (18m) reaching £1800 for James Stone. Grazing type cows very much on the wanted list again this week with British Blue types drawing £2200 for Martin and David Sampson with a couple of Blues from Mel Forward of Talaton making £1960 apiece whilst the Sampsons were back when selling a strong South Devon barrener for £1900.

Friday also saw the part dispersal of British Blonde breeding stock for Derek Arnold of Morchard Road. Derek brought some remarkable outfits which were a credit to him with returns including a 2016 born pedigree bred cow Doncombe Morwenna with her smart October 2024 born steer stood beside her selling to £3900 whilst a 2023 born pure bred cow sold with a June 2024 born heifer calf made £3500. Also, Dereks pedigree 2016 born in calf cow (due in June) Doncombe Meliae sold for £2450.

Results from our 2nd Spring 2025 Show and Sale of Continental bred store cattle

First Steers -	C Lee Colyton	2 Limousins (22m) @ £2540
Second Steers	B Davis Liskeard	1 Blonde (21m) @ £2600
First Heifers -	B Davis Liskeard	2 Blondes (24m) @ £2540
Second Heifers	B Vallance, Bickington	2 Limousins (23m) @ £2400

lease could we remind all customers of the need to clean and disinfect their vehicles and to complete the Vendor Declaration on the back of the entry forms.

Thank you

88 STIRKS & SUCKLED CALVES

Auctioneer: Ian Caunter 07813 068935

A tighter entry this week with trade for all types on fire. Top of the day saw AV & N Lee of Shobrooke presenting Angus steers (12m) which flew to £1600 with others to £1480. Crispin Alford in from South Zeal presented South Devon steers which realised £1450 (12m) with further pens to £1180 (9m). WJ Gillard & Sons in from Drewsteignton sold Charolais cross steers (10m) which raced to £1400 whilst Anton Coaker & Alison Green of Princetown showed further South Devon steers (11m) which realised £1350, £1190 & £1140. Best of the dairy bred stirks saw Ross Govier in from Exeter present Simmental cross steers (10m) which topped out at £1090 with Angus steers (11m) from Chris & Katie Steer of Ivybridge hitting £880 whilst young dairy bred Blue steers from the Courtier Family of Whiddon Down (5m) levelled out at £840. Heifers topped out at £990 for FS Davies Partnership of Crediton selling Angus' (15m). Ross Govier presented his Simmental cross heifers (9m) which realised £970 whilst the Lee Family of Rackenford levelled out at £900 for Limousin cross heifers (11m). South Devon heifers attained £850 for Crispin Alford whilst young Blue dairy bred stirks from the Courtier Family (5m) levelled out at £800. Simmental heifers (8m) from WJ Gillard & Sons achieved the same figure whilst Angus heifers from Chris & Katie Steer saw their first pen (11m) realise £790 with slightly younger types attaining £690. Bulls from Kevin Wreyford of Cornworthy topped out at £1040 for Hereford crosses (7m).

200 CALVES 10.15 AM

Auctioneer: Mark Davis 07773 371774

A super entry and a flying trade from start to finish!

Top of the day was £600 for a weaned Limousin bull from OJ Stephens of Liskeard who also sold a cracking run of young three to four week old Charolais bulls at £540, £520, £500, £480 x2 & £420 with other Charolais to £490, £480 & £438 for John Simmons of Poltimore. Young British Blue bulls sold to £572 & £485 for Rob & Jack Chapple of Axminster, £550 for Messrs RH & MJ Hurford of Axminster, £500 for Graham & Claire Mock of UMBERLEIGH, £445 & £440 for Gerald Emmett of Cullompton and £440 for Diepenbroek Farms Ltd of Seaton. Other young Limousin bulls to £410 for Chris Lee of Exeter and £360 for Messrs Nicholls of South Molton. Simmental bulls to £350 for Amber Wotton of Dartmouth. Native bulls a

CALVES	Bulls			Heifers		
		TOP	AVE		TOP	AVE
British Blue	28	572	336	37	528	307
Limousin	6	600	425	5	425	334
Charolais	12	540	441	4	420	320
Simmental	1	350	350	4	310	268
Hereford	21	445	313	15	560	277
Aberdeen Angus	18	500	315	16	460	248
Devon	1	330	330	2	340	280
Friesians	27	150	82			
Ayrshires	1	90	90			

tremendous trade topping at £500 for a super young Aberdeen Angus bull from Messrs CG Courtier & Son of Okehampton with other Angus to £460 for Mark & Anita Saunders of Cullompton, £445 & £412 for Richard Moore of Totnes, £415 for Bicton College of East Budleigh and £395 & £370 for Graham & Claire Mock. Young Hereford bulls to £445 for Richard Moore with others to £410 for Messrs J Cornish & Sons of Westleigh, £405 for Messrs J LH Vallis & Sons of Bradninch and £370 x 2 & £350 for Messrs AJ & AC Barrett of Liskeard. Heifer calves a flying trade topping at £560 for a weaned Hereford heifer from Ben Drury of Dartmouth. Young British Blue heifers to £528, £518, £465 & £435 for Messrs RH & MJ Hurford with others to £430 & £405 for John Camp of Totnes, £400 for Graham & Claire Mock, £385 for Diepenbroek Farms Ltd and £380 for Messrs J Cornish & Sons. Limousin heifers to £425 for Malcolm Harris of Kingsbridge and £360 for Chris Lee. Charolais heifers to £420 for OJ Stephens and £380 for John Simmons. Native calves sold very well with young Aberdeen Angus heifers to £460 for Mark & Anita Saunders, £440 & £400 for Ben Drury and £350 for Bicton College. Hereford heifers to £340 x 2 for Messrs AJ & AC Barrett and Richard Moore. Devon heifers to £340 for Graham & Claire Mock. Friesian bulls a cracking trade topping at £150 for Diepenbroek Farms Ltd, £140 for WD & SJ Hosegood of Crediton and £115 for Nigel, Brenda & Richard Tucker of Tiverton.

75 DAIRY 10.15 AM
Auctioneer: Mark Davis 07773 371774

A good entry of dairy cattle sold to an excellent trade for what was forward! A super consignment of British Friesian & crossbred cows & heifers from Messrs CG Courtier & Son of Okehampton sold to an excellent trade topping at £2400 for a smart fresh second calver with others from the same farm to £2200 & £2150. The same vendors sold older cows to £1900 & £1850 twice for fourth & fifth calvers, their consignment of 16 which the majority had calved 4-5 months averaged very well at £1751.

The dispersal sale of the Friesian and crossbred herd on behalf of Messrs AJ & AC Barrett of Liskeard sold well to a top of 2150gns for a smart second calver with others to £1900 & 1850gns. Jersey x cows sold to 1850gns and 1600gns with an overall average including many older and three quartered cows of £1280.

1628 SHEEP – 10.45 AM
Auctioneer: Russell Steer 07788 318701

Orphan Lambs to £58 Store Hogs to £164 Grazing Ewes to £196
Double Couples to £395 Singles to £300

75 ORPHAN LAMBS

A strong trade in all sections of the sheep pens today, with the 74 orphan lambs levelling at £29.50 with tops of £58 for four from Malcolm and Edward Pring of Broadclyst, Cecil Partridge of Calverleigh sold five at £56 and plenty of other younger sorts from £30 to £45.

1051 STORE HOGGS

Just over 1000 store hogs again today and trade just as strong despite a few deadweight firms dropping the price for next week. Nick and Sam Harding of Torrington had their tidy up of hogs today with some big uns at £164 as well as slightly lighter good meat hogs at £156.50 & £155.50 as Mr Banbury up from St Austell sold his best at £155.50 and £153 with Tom Dawe of Lifton at £152.50 and Sam Avery of Yarnscombe at £149.50 & £144.50. Sam Pedrick of Bovey Tracey sold Cheviot tup hogs at £148, a price matched by Nick and Sam Harding with their last pen as Chipley Farm Ltd of Bickington sold Primeira ewe hogs at £144.50, Reg and Mark Kingdon of Shirwell, Barnstaple claimed £143.50 and £139.50 with Dan Alford of Tavistock at £141.50 and D Hooper of Saltash at £141. All medium and shorter term hogs continuing to sell well to great competition however as we enter the end of March the bottom end hogs met with less enquiry and are £50-£90 on realization. Overall average of £119.74 is within a pound of last week's price.

120 GRAZING EWES

Demand just as hot as Monday's crazy trade and remarked by one buyer as "as dear as we've ever seen these ewes". Top money to Suffolk crosses from Richard and Angela Smaridge of East Allington, Mark Radmore of Sheepstor at £189 & £176, Mj Pengelly of Beaford claimed £184 and both Tom Mundy of and Anthony Coker of Rattery achieved £179 of their best. Mules to £157 for Francis and Rob Clements of Worlington and Whiteface Dartmoors to £106 again for Richard & Angela Smaridge. All grazers levelled at £121, a pleasing result given the overall lack of meat.

155 EWES & 227 LAMBS (382 LIVES)

A larger entry saw more quality forward again this week and a three figure average was achieved with probably the most buyers seen all year meaning all qualities and breeds were keenly chased. Sandra Harler of Buckfast sold Texel type older ewes with twins to £395, £368, £365 & £355 as Westway Farm of Way Village sold their best twins to £375 & £360 and Matt Wreyford of Blackawton had twins in large pens at £370, £355 and £350 twice. Other eye-catching twins to £355 for BH Lane of Combe Raleigh, £315 for Messrs Hatherley and Rendle of Tamerton Foliot and £310 for Anthony Tucker of Kingsnympton. Singles topped at £300 for Matt Wreyford with others from this good home at £275 & £262, BH Lane had six Suffolk cross singles at £295 and Westway Farm sold singles at £280, £260 & £250. Little Cheviot and hill bred ewes with young lambs upwards of £50 per life with a notable large pen of F/BM Cheviot x ewes with singles at £172 for the Wright Family of Chittlehamholt. Overall averages of £250 per outfit or £101.30 per life.



Penbode
Farm Vets

- Competitively priced farm medicines
- Dairy and beef fertility clubs
- 24/7/365 veterinary cover
- Livestock fertility testing and advice
- VetTech services
- In-house labs and lambing bays

www.penbodevets.co.uk
Holsworthy | Bradworthy | Stratton | Launceston | Camelford

FODDER AVAILABLE BY PRIVATE TREATY

HARBERTONFORD, SOUTH DEVON

KIVELLS
www.kivells.com

75 Bales of second cut silage. 120 x 90 6ft bales. Made in good condition. August 2024

Good access for tractor and trailer.

Delivery by separate negotiation.

Please contact **IAN CAUNTER** at Exeter Livestock Centre

07813 068935 or ian.caunter@kivells.com for further details

Pause for a moment
Understand how *YOU* are
How your best friend *IS*
How those around you *ARE*

LEN'S



LIGHT

24TH-30TH
MARCH
2025

The Big Farm Tea Break

Take the time to *STOP*,
pop the kettle on, make a phone call
and *catch up*.

If you need to, reach out
www.lenslight.co.uk/reachout



FORTHCOMING SALES

MONDAY 24TH MARCH – EXETER LIVESTOCK CENTRE

Weekly Prime Stock Market

FRIDAY 28TH MARCH – EXETER LIVESTOCK CENTRE

Weekly Store Stock Market to inc Monthly Sale of Organic Cattle & Sheep, Sale of Dairy Cattle and Fortnightly Pig Sale

MONDAY 31ST MARCH – EXETER LIVESTOCK CENTRE

Weekly Prime Stock Market

FRIDAY 4TH APRIL – EXETER LIVESTOCK CENTRE

Weekly Store Stock Market to inc Centurion Sheep Breeders Sale of Dorset Ewes and Rams

MONDAY 7TH APRIL – EXETER LIVESTOCK CENTRE

Weekly Prime Stock Market

WEDNESDAY 9TH APRIL – EXETER LIVESTOCK CENTRE

Spring Sale of Cattle on behalf of the South Devon Herd Book Society

FRIDAY 11TH APRIL – EXETER LIVESTOCK CENTRE

Weekly Store Stock Market to inc “Heart of Devon” 13th Anniversary – 3rd Spring Sale of Continental & Continental X Store Cattle, Special Show & Sale of Charolais Bulls and Females, Sale of Dairy Cattle including English Gold Top Sale of Jerseys, Show & Sale of Suckled Calves, Show and Sale of Ewes and Lambs and Fortnightly Pig Sale

MONDAY 14TH APRIL – EXETER LIVESTOCK CENTRE

Weekly Prime Stock Market to inc Easter Show & Sale of Spring Lambs

WEDNESDAY 16TH APRIL – EXETER LIVESTOCK CENTRE

Devon YFC Show & Sale

FRIDAY 18TH APRIL – EXETER LIVESTOCK CENTRE

GOOD FRIDAY – NO MARKET

MONDAY 21ST APRIL – EXETER LIVESTOCK CENTRE

Weekly Prime Stock Market

TUESDAY 18TH MARCH – EXETER LIVESTOCK CENTRE

Sale of TB Restricted, Cull, Prime and Store Cattle

FRIDAY 25TH APRIL – EXETER LIVESTOCK CENTRE

Weekly Store Stock Market to inc Monthly Sale of Organic Cattle & Sheep, Month Catalogued Sale of Beef Breeding Stock and Fortnightly Pig Sale

Farms | Land | Smallholdings

Thinking of selling?

Kivells are at the heart of the farming community throughout the westcountry and beyond and have been selling farms, land and smallholdings since 1885.



Our tailor made service includes;

- ✓ Personal and confidential service
- ✓ Experienced team of Farm Agents
- ✓ Tailor made marketing plans across a variety of platforms
- ✓ Network of contacts within the farming community
- ✓ Added value with advice on Tax, Planning and Stewardship



In-house
bespoke
brochures



Over 40,000
followers on
Social Media



Millions of
page views on
kivells.com,
Rightmove
& Zoopa



Coverage in
national and
regional
publications

With 140 years of industry experience, we pride ourselves in providing friendly and professional advice on all aspects of selling your farm, land or smallholding.

Farms For Sale

KIVELLS

www.kivells.com

Blagdon Manor Farm North Tamerton, Holsworthy

Privately set residential and livestock farm on the Devon/Cornwall border.

- Just under 200 acres of ring fenced land
- Imposing four/five bedroom Grade II listed farmhouse and two bedroom bungalow (subject to Agricultural Occupancy Condition)
- Extensive range of modern livestock buildings, plus some more traditional stone barns with potential, subject to planning
- Equestrian appeal with stabling, all weather track and sand school/turnout areas
- Huge appeal with enormous potential to diversify

Guide Price: £2,500,000

Holsworthy Farms & Land Department
farms@kivells.com | 01409 259547



Farms For Sale

KIVELLS

www.kivells.com

Tregonhaye Farm Kergilliack, Falmouth

Beautifully positioned stock farm, within easy reach of Falmouth, Helford Passage and the South Coast.

- Substantial and well appointed six bedroom farmhouse
- Useful range of adaptable buildings
- 85½ acres of private ring-fenced land
- Superb views
- EPC G

Guide Price: £2,000,000

Holworthy Farms & Land Department
farms@kivells.com | 01409 259547



Farms For Sale

KIVELLS

www.kivells.com

Dairy Unit and Land at Melbury Parkham, Bideford

- Ring fenced modern dairy unit
- 127 cubicles
- 10/20 swing over parlour
- Youngstock building
- Just under 50 acres

Guide Price: £800,000

Holsworthy Farms & Land Department
farms@kivells.com | 01409 259547



Farms For Sale

KIVELLS

www.kivells.com

West Burrow Farm Bratton Clovelly, Okehampton

A quietly set rural small holding offering huge potential.

- Grade II* Listed thatched farmhouse in need of modernisation.
- 3 beds, 2 receptions.
- Two adjoining traditional barns.
- Land and woodland

Guide Price: £750,000

Holsworthy Farms & Land Department
farms@kivells.com | 01409 259547



Farms For Sale

KIVELLS

www.kivells.com

Landabethick Farm Blisland, Bodmin

Available as a whole or in 2 lots

- Five/six bedroom (one en suite) detached house, three reception rooms and conservatory
- Splendid private location
- Located on the fringe of the wide expanses of Bodmin Moor, close to the sought-after moorland village of Blisland
- Barns ripe for conversion
- Access to the Camel Trail for walking and cycling only 0.5 miles distant
- In all 77.11 acres of agricultural land and ancient woodland

LOT 1 - House, buildings and 54.83 acres.
Guide Price: £1,450,000

LOT 2 - Approximately 22.28 acres of ancient woodland.
Guide Price: £150,000

As a whole: £1,600,000

Liskeard Farms & Land Department
mark.bunt@kivells.com | 01579 345543



Farms For Sale

KIVELLS

www.kivells.com

Fern Hill Farm Mount, Bodmin

- Farm with significant development potential
- Range of agricultural and equestrian buildings
- 60.29 acres of land including productive pasture
- Two bedroom lodge
- Planning for farm dwelling and residential caravan
- Located in a super rural location with far reaching valley views
- Freehold with vacant possession upon completion

Guide Price: £1,200,000

Liskeard Farms & Land Department
mark.bunt@kivells.com | 01579 345543



Farms For Sale

KIVELLS

www.kivells.com

Tregaminion Manor Farm Morvah, Pendeen, Penzance

- Idyllic coastal setting
- Ring fenced farm in an Area of Outstanding Natural Beauty
- Multiple dwellings for income generation or multi-generational living
- Period farmhouse and two cottages
- Range of modern and traditional farm buildings
- Development opportunities with some planning consent in place
- In all some 118 acres
- EPC C, G & G.

Guide Price: £2,500,000

Holsworthy Farms & Land Department
farms@kivells.com | 01409 259547



Farms For Sale

KIVELLS

www.kivells.com

Higher Norley Farm Northlew, Okehampton

- Just over 93 acres of productive pasture land
- A useful range of farm buildings including 96 cubicles, loose housing, fodder store and workshop
- Wonderful far reaching views to Dartmoor
- For sale by Private Treaty.

Guide Price: £1,100,000

Holsworthy Farms & Land Department
farms@kivells.com | 01409 259547



Development Site **For Sale**

KIVELLS

www.kivells.com

Development Site at Lower Newton Farm Zeal Monachorum, CREDITON, Devon

- Valuable residential development opportunity
- Range of agricultural buildings with planning permission for demolition and creation of three new build, detached four and three bedroom dwellings
- Potential under extension of Permitted Development Rights for retention and conversion of the existing buildings (Clarkson's Law – Maximum 10 dwellings), subject to planning
- Additional land available

Guide Price: £450,000

Exeter Farms & Land Department
simon.alford@kivells.com | 01392 252262



Aerial view looking north west

Land For Sale

KIVELLS

www.kivells.com

Land at Yollaberry

Hatherleigh | Guide Price £120,000 - £140,000



Just over 9¾ acres of gently sloping pasture land in a stunning location with parish road frontage and lane access.

Holsworthy Farms & Land Agency
Farms@kivells.com | 01409 259547

Land at Stoke Canon

Exeter, Devon | Offers in Excess of £375,000



A highly productive run of level arable and pastureland with livestock handling pens extending to just under 46 acres.

Exeter Farms & Land Department
simon.alford@kivells.com | 01392 252262

Land at Hole Farm (Lot 1)

Ashwater, Beaworthy | Guide Price £620,000



Approx. 57.58 acres of well farmed productive grassland. Mainly level/gently sloping and extremely well fenced.

Holsworthy Farms & Land Agency
Farms@kivells.com | 01409 259547

Land at Polzeath

Wadebridge, Cornwall | Guide Price £995,000



Just over 15 acres of prime farmland in a stunning location with long term development potential, subject to planning.

Holsworthy Farms & Land Department
farms@kivells.com | 01409 259547

Land at Pipswell Cross

Morwenstow, Bude | Guide Price £290,000



Just under 35 acres of productive pasture and arable ground in a sought after farming area with road frontage and access and far-reaching views as far as Lundy Island.

Holsworthy Farms & Land Agency
Farms@kivells.com | 01409 259547

Land for Auction

Wednesday 9th April, 7.00pm

Venue: Lifton Strawberry Fields, Lifton, Devon PL16 ODE

KIVELLS

www.kivells.com

Land at Holemoor

Bradford, Holsworthy | Auction Guide Price £35,000 - £40,000
For sale by public auction - Wednesday 9th April



Just under 4 acres of gently sloping pasture land on the edge of a rural hamlet boasting road frontage and access and lovely countryside views.

Holsworthy Farms & Land Agency
farms@kivells.com | 01409 259547

Land at St. Erney

St. Erney, Landrake, Saltash | Auction Guide Price £65,000
For sale by public auction - Wednesday 9th April



Extending to some 6.07 acres in all, the Land at Erney comprises a single field, which is currently planted with a variety of brassicas.

Holsworthy Farms & Land Agency
farms@kivells.com | 01409 259547

Land at Land at Broad Parkham

Parkham, Bideford | Auction Guide Price £140,000 - £150,000
For sale by public auction - Wednesday 9th April



14.65 acres comprises two gently sloping pasture fields including a small area of woodland. The land benefits from parish road frontage, good access and natural and mains water.

Holsworthy Farms & Land Agency
farms@kivells.com | 01409 259547

Land at Highercliff Woods

Duloe, Liskeard | Auction Guide Price £60,000 - £70,000
For sale by public auction - Wednesday 9th April



Woodland extending to approximately 19.67 acres comprising a block of mature Beech trees supporting a wide range of flora and fauna and situated off a quiet parish road.

Liskeard Farms & Land Agency
mark.bunt@kivells.com | 01579 345543

Land at Venncott

Newton St. Petrock, Holsworthy | Auction Guide Price £60,000
For sale by public auction - Wednesday 9th April



The Land at Venncott extends to some 6.46 acres and comprises very gently sloping pasture land which is divided into two handy sized enclosures.

Holsworthy Farms & Land Agency
farms@kivells.com | 01409 259547

Plot of land beside Queensland

Trelights, Port Isaac | Auction Guide Price £50,000
For sale by public auction - Wednesday 9th April



A generous plot of agricultural land extending to circa 0.22 acres with excellent further potential to add value with a variety of uses, all subject to obtaining the necessary planning consents.

Launceston Estate Agents
launceston@kivells.com | 01566 777777

Previous Auction Results

Wednesday 12th March

KIVELLS

www.kivells.com

Land at Fiddlecott

Chawleigh, Chulmleigh | Auction Guide Price £175,000
SOLD: £256,000



Extending to some 25.46 acres comprising a useful block of gently sloping grass land with just under 8 acres of scrub and native woodland on its southern boundary.

Holsworthy Farms & Land Agency
farms@kivells.com | 01409 259547

Land at Boldventure

Germansweek, Beaworthy | Auction Guide Price £75,000 - £95,000
SOLD: £90,000



Approximately 12 acres of pastureland with excellent road access and accessible to Launceston, Okehampton, Bude and Holsworthy.

Holsworthy Estate Agents
holsworthy@kivells.com | 01409 253 888

Land at Penvith

St. Martin, Looe | Auction Guide Price £50,000 - £55,000
SOLD: £116,000



5.47 acres of pasture land in a single enclosure with parish road frontage and a timber frame and timber clad field shelter. Freehold with vacant possession upon completion.

Liskeard Farms & Land Department
mark.bunt@kivells.com | 01579 345 543

Land near St Winwolaus's Church

Tremaine, Launceston | Auction Guide Price £10,000
SOLD: £9,000



Approximately 0.24 acres of land in a rural yet convenient location suitable for a number of purposes including amenity or recreational use.

Holsworthy Farms & Land Agency
Farms@kivells.com | 01409 259547

Land at Scrubtor

Tavistock | Auction Guide Price £45,000 - £50,000
SOLD: £50,000



Approximately 3.49 acres of pasture land in a single gently sloping enclosure with parish road frontage.

Liskeard Farms & Land Agency
mark.bunt@kivells.com | 01579 345543

Farms Sale Agreed

KIVELLS

www.kivells.com

Keymelford Farm Buildings & Land Keymelford, Colebrook, Crediton, Devon



Lot 1 - Agricultural buildings and yard area with land surrounding extending to 0.41 acres.
Guide Price: £150,000

Lot 2 - Agricultural building with concrete pad and land surrounding extending to 0.41 acres.
Guide Price: £135,000

Lot 3 - A small grassland area extending to approximately 0.14 acres. **Guide Price: £25,000**

Exeter Farms & Land Agency
exeter@kivells.com | 01392 252262

Pheasantry Farm Chawleigh, Chulmleigh



Lot 1: Pheasantry Farm Bungalow, Gardens, Agricultural Buildings and approximately 5.83 acres of land.
Guide Price: £625,000

Lot 2: Agricultural Building together with approximately 5.96 acres of land.
Guide Price: £125,000

Guide Price as a Whole: £750,000

Exeter Farms & Land Department
ian.caunter@kivells.com | 01392 252 262

Farms Sale Agreed

KIVELLS

www.kivells.com

Worthen Farm Pyworthy, Holsworthy, Devon



- Grassy ring fenced stock farm with 151 acres
- South facing three bedroom period farmhouse and adjoining two bedroom cottage (suitable for holiday letting)
- Two further traditional barns with potential for conversion, subject to planning
- Range of adaptable farm buildings
- Level and gently sloping pasture land
- EPC D & D

Guide Price: £2,150,000

Holsworthy Farms & Land Department
farms@kivells.com | 01409 259547

Larrick Farm South Petherwin, Launceston

- Super reverse living barn conversion
- 4 bedrooms and 2 bathrooms
- Outbuildings for livestock or equestrian use
- 45 acres of pasture land

Guide Price: £1,000,000

Holsworthy Farms & Land Department
farms@kivells.com | 01409 259547



Land at High Ridge Farm North Tawton, Devon



A highly productive run of approx. 34 acres of level pasture land with planning permission for a 80ft x 40ft storage shed.

Guide Price £340,000

Exeter Farms & Land Department
simon.alford@kivells.com | 01392 252262



Land Forming Part Fursdon, Newtake, Foxhole, Waddons & Kingston Staverton, Totnes

For sale by private treaty as a whole or in 7 lots

A rare opportunity to purchase approximately 331.16 acres of immaculate rolling pasture land located on the northern fringes of the popular South Hams. Primarily south facing, the land is of level to sloping in topography, containing principally Grade 3 freely draining, slightly acidic loamy soils. The fields are divided into good sized, easily workable enclosures and are complete with stock proof fencing and well-maintained hedgerow boundaries.

LOT 1 : 91.73 acres of agricultural land known as Fursdown.

Guide: £825,000

LOT 2: 103.83 acres of agricultural land known as Newtake.

Guide: £865,000

LOT 2A: Newtake Paddocks totalling 4.63 acres of land.

Guide: £185,000

LOT 3: 19.96 acres of agricultural land known as Foxhole.

Guide: £200,000

LOT 4: 60.79 acres of agricultural land known as Waddons.

Guide: £550,000

LOT 5: 36.09 acres of agricultural land known as Kingston.

Guide: £325,000

LOT 6: 14.13 acres of agricultural land known as Waddons Meadow.

Guide: £145,000

Exeter Farms & Land Department
ian.caunter@kivells.com | 01392 252262



Land Sale Agreed

KIVELLS

www.kivells.com

Land at Wooldown

Marhamchurch, Bude | Guide Price £100,000



An attractive and very gently sloping pasture field extending to approx. 4.63 acres, well fenced with road frontage and good access.

Holsworthy Farms & Land Agency
Farms@kivells.com | 01409 259547

Land at Hole Farm (Lot 2)

Ashwater, Beaworthy | Guide Price £375,000



Just over 37 acres of well farmed, productive grassland. Mainly level/gently sloping and extremely well fenced. Mains and natural water supplies.

Holsworthy Farms & Land Agency
Farms@kivells.com | 01409 259547

Land at Cransworth

St. Wenn, Bodmin | Guide Price £525,000



Approx. 57 acres of productive pasture land, gently sloping and south facing with road frontage and a natural water available.

Holsworthy Farms & Land Agency
Farms@kivells.com | 01409 259547

Land at West Vognacott & Honeycroft (Lot 1)

Chilsworthy, Holsworthy | Guide Price £345,000



Just under 55 acres of pasture and amenity land in a quiet, rural setting. Further land available (lots 2 & 3).

Holsworthy Farms & Land Agency
Farms@kivells.com | 01409 259547

Land at West Vognacott & Honeycroft (Lot 2)

Chilsworthy, Holsworthy | Guide Price £200,000



Some 29 acres of pasture land in a quiet rural, yet accessible location. Further land available as Lots 1 & 3.

Holsworthy Farms & Land Agency
Farms@kivells.com | 01409 259547

Land at Myrtle Cottage Farm

Alverdiscott, Barnstaple | Offers in Excess of £425,000



A cracking run of nearly 43 acres of pasture land, level and gently sloping with road frontage and excellent access.

Holsworthy Farms & Land Agency
Farms@kivells.com | 01409 259547

Land Sale Agreed

KIVELLS

www.kivells.com

Land at Lower Rescorla Farm Rescorla, St Austell | Guide Price £100,000



Just under 4 acres of sloping amenity/pasture land on the edge of a rural hamlet. Possible development potential (STP)

Holsworthy Farms & Land Agency
Farms@kivells.com | 01409 259547

Land at Southcombe Northlew, Okehampton | Guide Price £130,000



A block of approx. 19.14 acres of peacefully located pretty pasture and woodland, gently sloping and in three good sized enclosures with a natural water supply.

Holsworthy Farms & Land Agency
Farms@kivells.com | 01409 259547